



INSTALLATION INSTRUCTIONS

Accessory

WINDSHIELD WIPER KIT
P/N 0SE10-HL3-A00

Application

SXS700 M2/M4

Publication No.

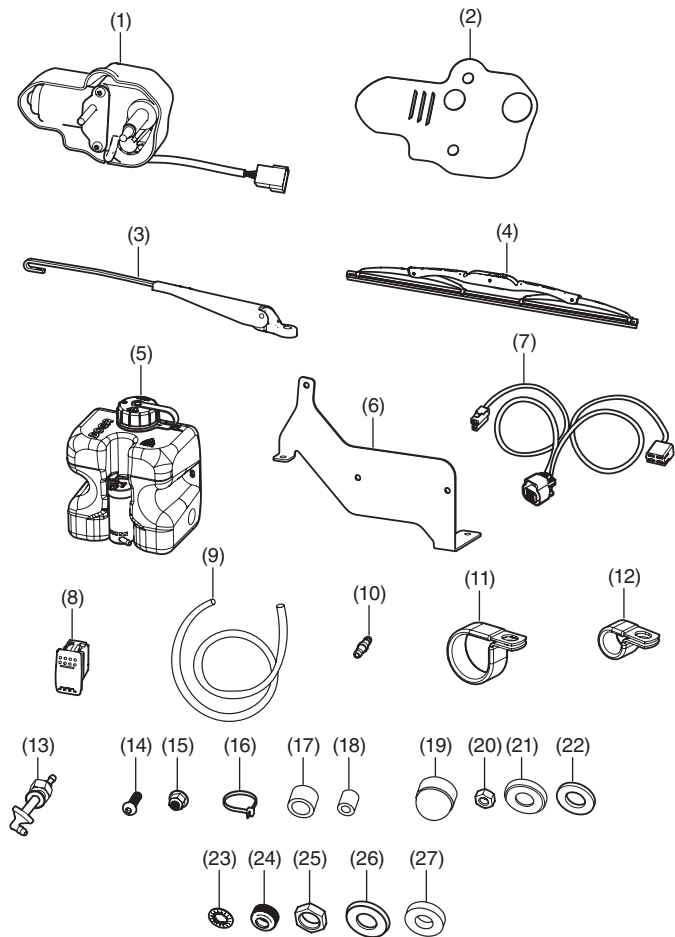
MII 17775

Issue Date

August 2022

Honda Dealer: Please give a copy of these instructions to your customer.

PARTS LIST



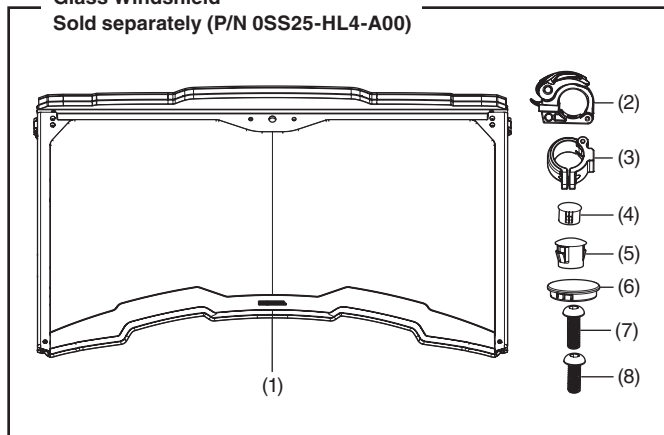
No.	Description	Qty
(1)	Wiper motor	1
(2)	Wiper motor cover plate	1
(3)	Wiper arm	1
(4)	Wiper blade	1
(5)	Washer tank with pump	1
(6)	Washer tank bracket	1
(7)	Wiper/washer wiring harness	1
(8)	Switch	1
(9)	Washer hose	16 ft.
(10)	Washer hose connector	1
(11)	Large P-clip	1
(12)	Small P-clip	1
(13)	Elbow connector assembly	1
(14)	M6 × 20 mm button head screw	4
(15)	M6 flange nut	4
(16)	Cable tie	6
(17)	Large spacer	1
(18)	Small spacer	1
(19)	Stud cap	1
(20)	Stud nut	1
(21)	Small cupped washer	2
(22)	Small rubber washer	2
(23)	Spindle toothed washer	1
(24)	Spindle cap	1
(25)	Large spindle nut	1
(26)	Large cupped washer	2
(27)	Large rubber washer	3
(28)	Installation Instruction URL*	1

* Not Shown

REQUIRED ACCESSORIES

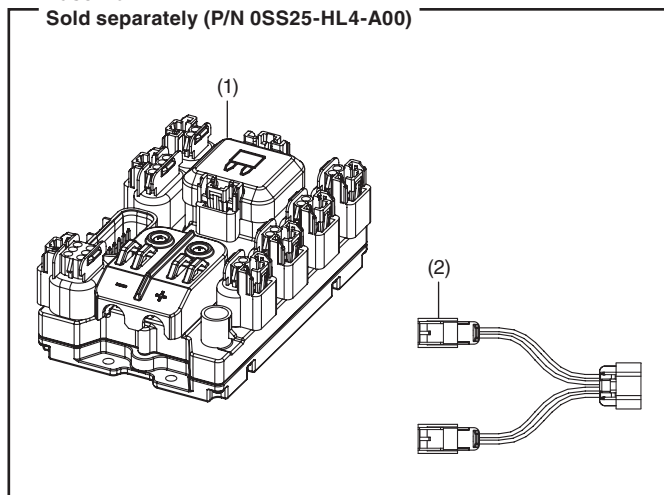
The items below are required for the installation of this accessory.

Glass Windshield Sold separately (P/N 0SS25-HL4-A00)



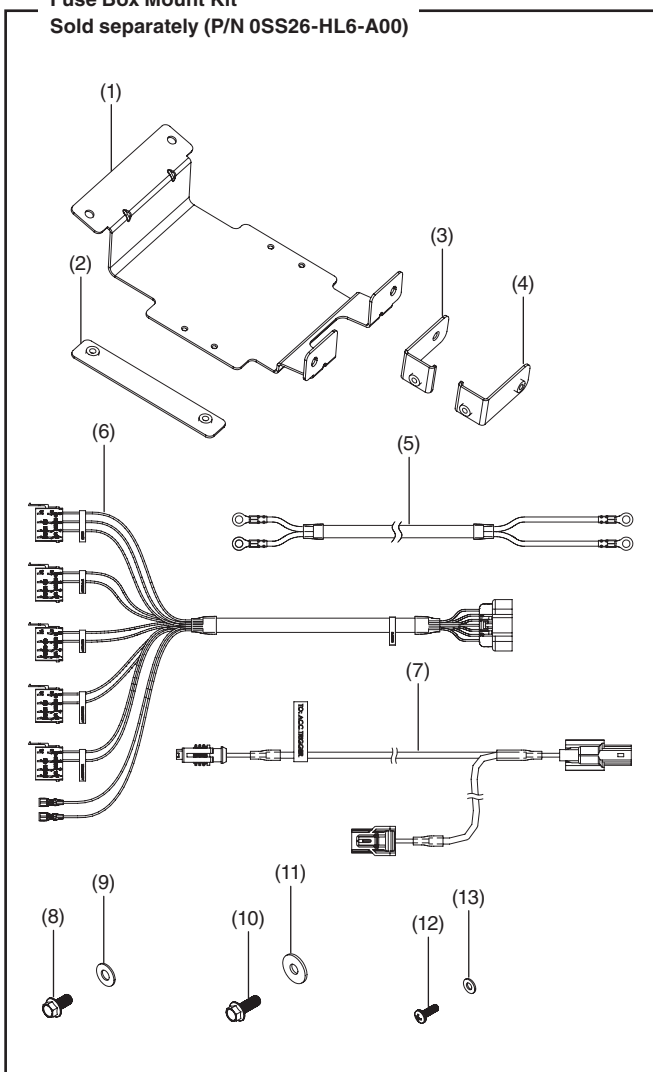
No.	Description	Qty
(1)	Windshield assembly	1
(2)	Upper cam lock	2
(3)	Lower cam lock	2
(4)	Small plug	2
(5)	Medium plug	4
(6)	Large plug	1
(7)	18 mm button head bolt	4
(8)	16 mm button head bolt	4

Fuse Box Sold separately (P/N 0SS25-HL4-A00)



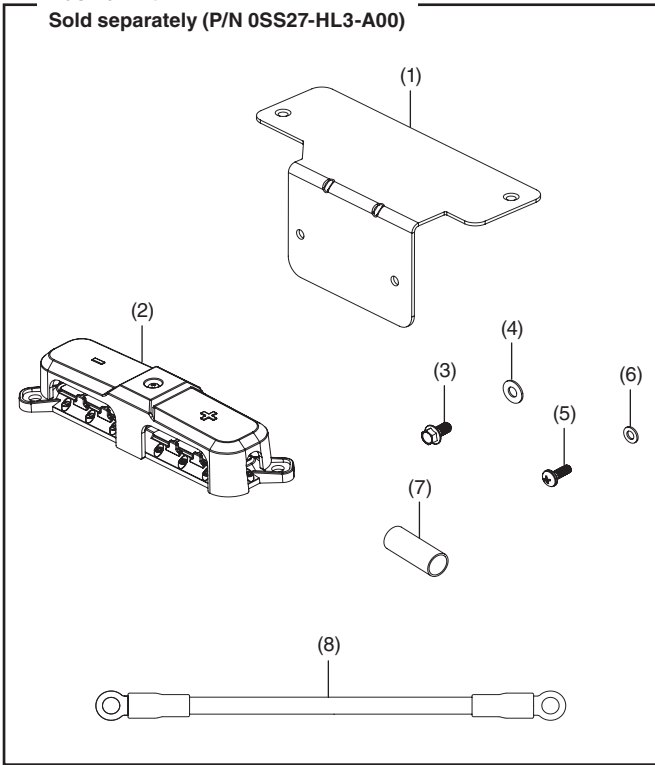
No.	Description	Qty
(1)	Fuse box switcher	1
(2)	Harness, 4-pin to 2-pin (Y-splitter)	1

Fuse Box Mount Kit Sold separately (P/N 0SS26-HL6-A00)



No.	Description	Qty
(1)	Fuse box mounting plate	1
(2)	Front under bracket	1
(3)	Driver side L-bracket	1
(4)	Passenger side L-bracket	1
(5)	Input power cables	1
(6)	Switch wiring harness	1
(7)	Accessory trigger cable	1
(8)	8 mm hex head M6 flange screw, 12 mm long	4
(9)	M6 flat washer, 14 mm o.d.	4
(10)	8 mm hex head M6 flange screw, 16 mm long	2
(11)	M6 flat washer, 18 mm o.d.	2
(12)	M4 x 0.7 phillips screw, 12 mm long	4
(13)	M4 flat washer	4

Bus Bar Kit
Sold separately (P/N 0SS27-HL3-A00)



No.	Description	Qty
(1)	Bus bar mounting plate	1
(2)	Bus bar	1
(3)	M6 x 12 mm flange screw (8 mm head)	2
(4)	M6 x 14 mm flat washer	2
(5)	Phillips pan-head screw M5 x 14 mm	2
(6)	M5 x 10 mm flat washer	2
(7)	Heat shrink	1
(8)	Harness, #6 AWG ground cable (21")	1

TOOLS AND SUPPLIES REQUIRED

- Wrench (13 mm)
- Wrench (22 mm)
- Torque wrench
- Thread lock (Loctite 242 "blue" or equivalent)

TORQUE CHART

Tighten all screws, bolts, and nuts to their specified tightening torque values. Refer to the Service Manual for the tightening torque values of the removed parts.

Item	N·m	kgf·m	lbf·ft
16 mm nut	4	0.41	2.95
8 mm nut	6	0.61	4.42
8 mm nut (step 15 only)	25	2.55	18

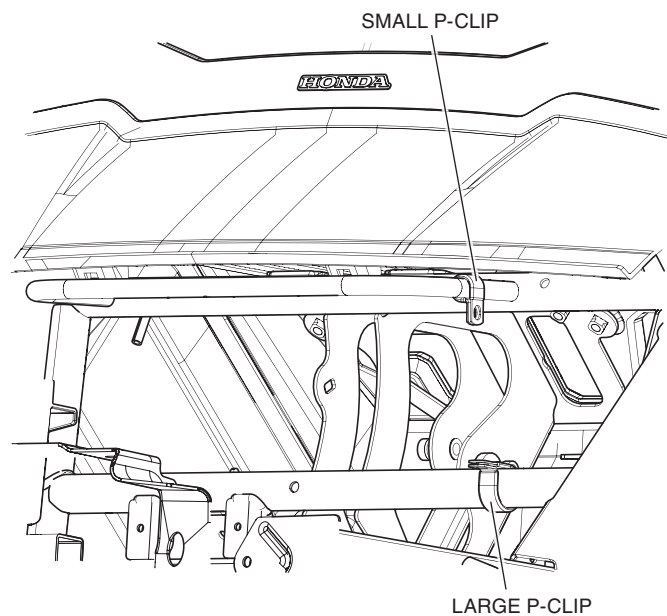
USE AND CARE INFORMATION

- Check the accessory mount frequently and retighten if necessary.
- Replace this accessory with a new one if it is damaged or discolored excessively.
- When this accessory becomes dirty, rinse it thoroughly with cool water to remove loose dirt, then wipe with a clean cloth or sponge.
- Do not use a brush to clean this accessory as it may scratch the surface.
- Never clean with or expose this accessory to petroleum solvents such as gasoline, thinner, benzene, acid, or alkaline cleaners.

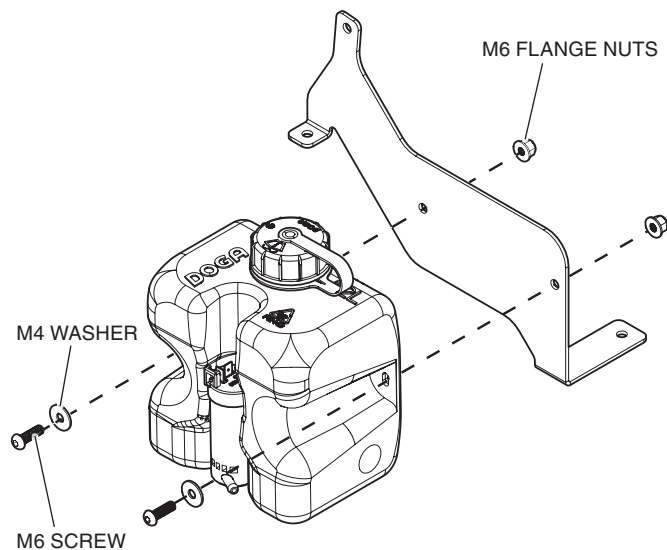
INSTALLATION

1. Install all required accessories before starting installation.
2. Install the accessories glass windshield, fuse box, fuse box mount, and bus bar as required.
3. Remove the hood panel from the front of the vehicle.
4. Position the large P-clip around the internal support bar as shown.

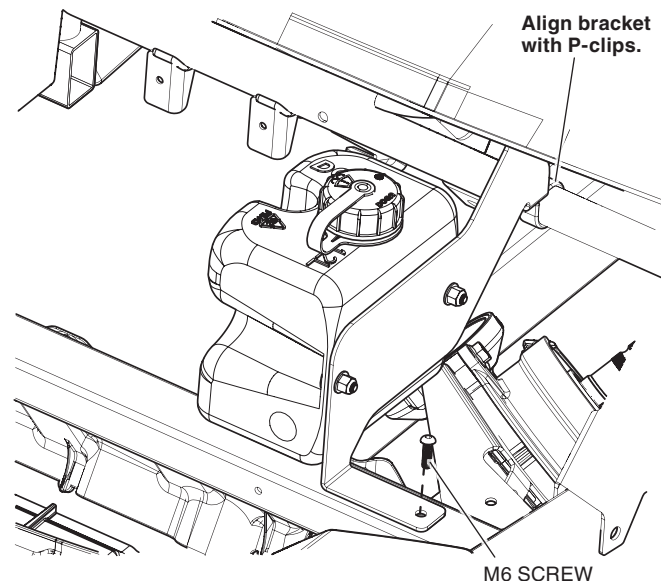
- Position the small P-clip around the left side of the upper support bar as shown.



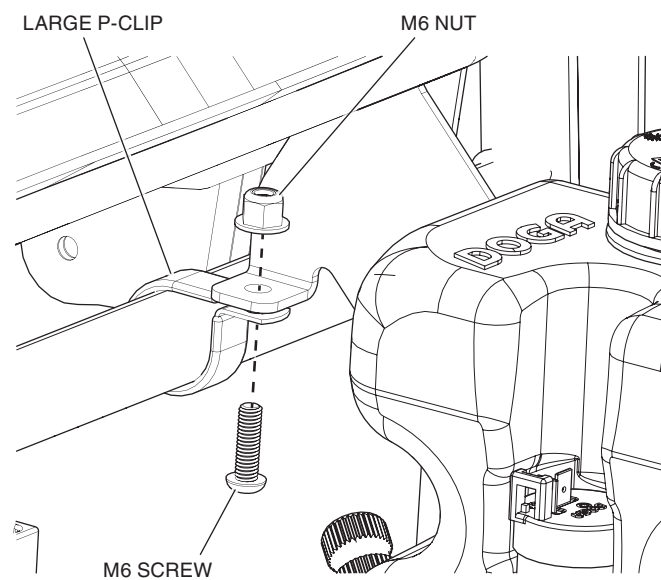
- Fasten the washer tank to the washer tank bracket using two M6 × 20 mm button head screws, two M4 washers, and two M6 flange nuts as shown.



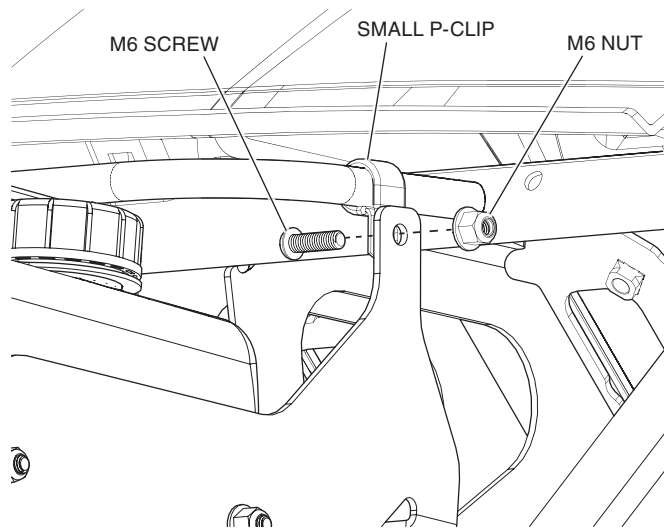
- Position the washer tank and bracket inside the front of the vehicle so the bracket lines up with the P-clips, then fasten one screw attaching the bracket to the vehicle frame.



- Attach the large P-clip to the washer tank bracket using one M6 × 20 mm button head screw and one M6 flange nut as shown.

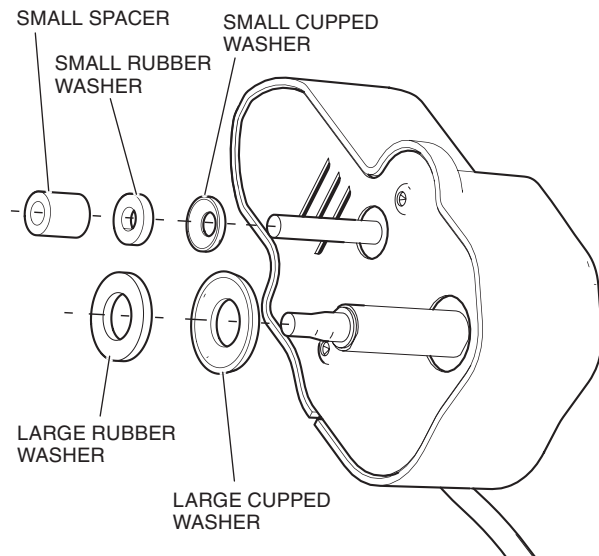


- Attach the small P-clip to the washer tank bracket using one M6 × 20 mm button head screw and one M6 flange nut as shown.

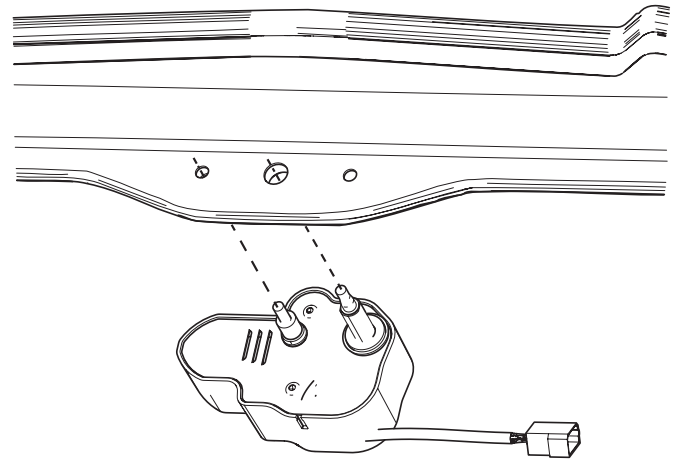


WASHER/WIPER INSTALLATION

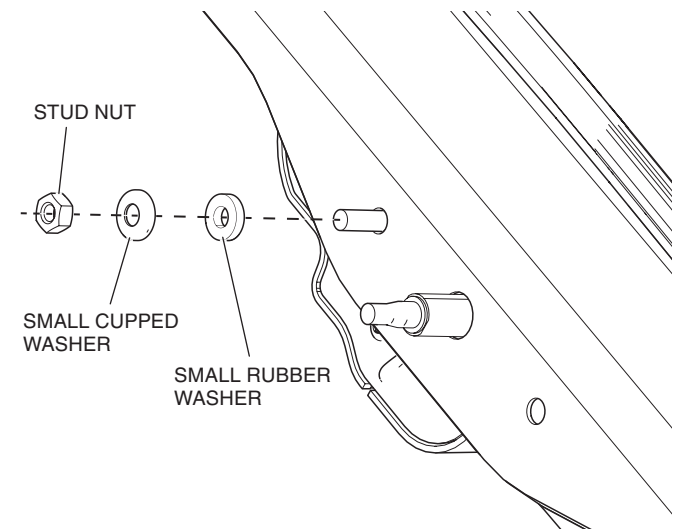
- Fit a small cupped washer, small rubber washer and the small spacer over the mounting stud on the motor.
- Fit a large cupped washer and a large rubber washer over the motor spindle of the motor as shown.



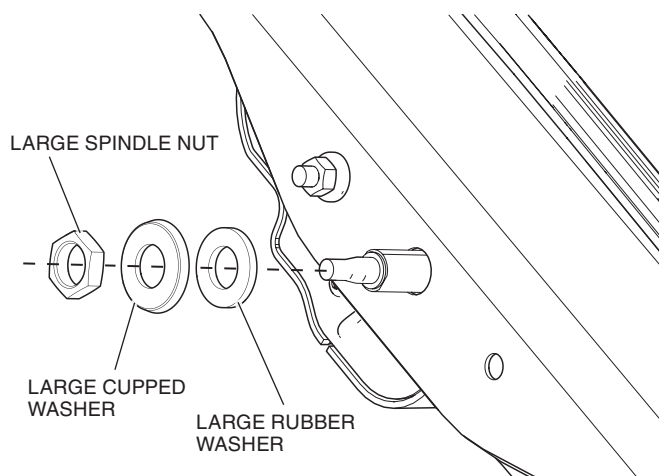
- Insert the motor into the windshield so the motor spindle fits through the center hole and the mounting stud fits through the right most hole as viewed from inside the vehicle.



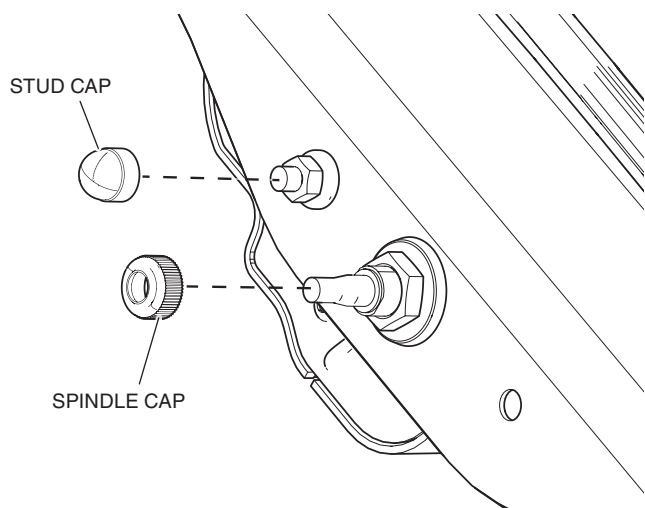
- Fit a small rubber washer and a small cupped washer over the mounting stud then fasten the stud nut to the mounting stud to hold the motor in place.



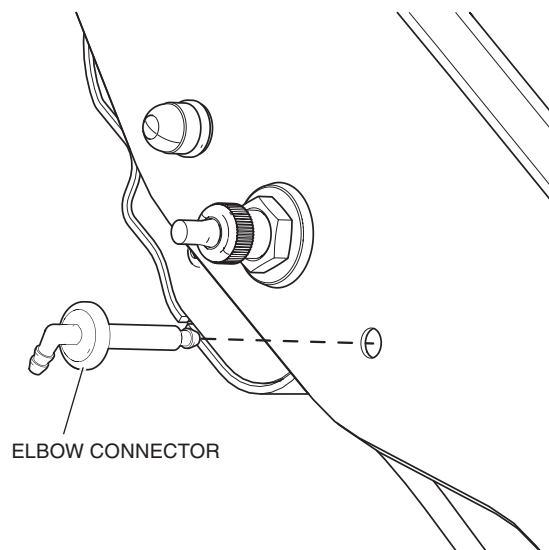
5. Fit a large rubber washer and a large cupped washer over the motor spindle then fasten the large spindle nut to secure the motor.



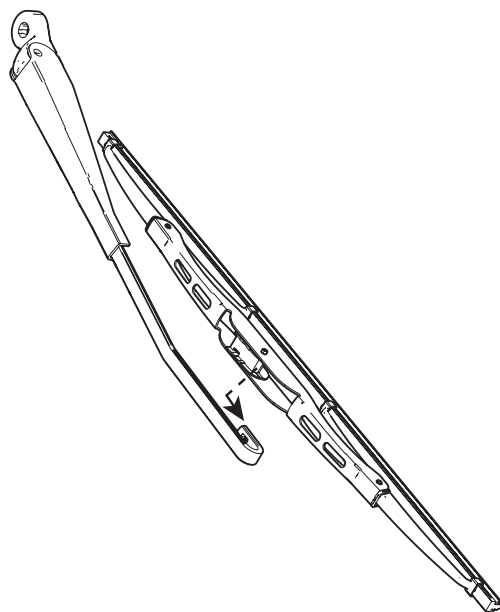
6. Fasten the spindle cap over the motor spindle and the stud cap over the mounting stud as shown.



7. Insert the elbow connector into the left-most hole of the windshield and secure with the included nut as shown.

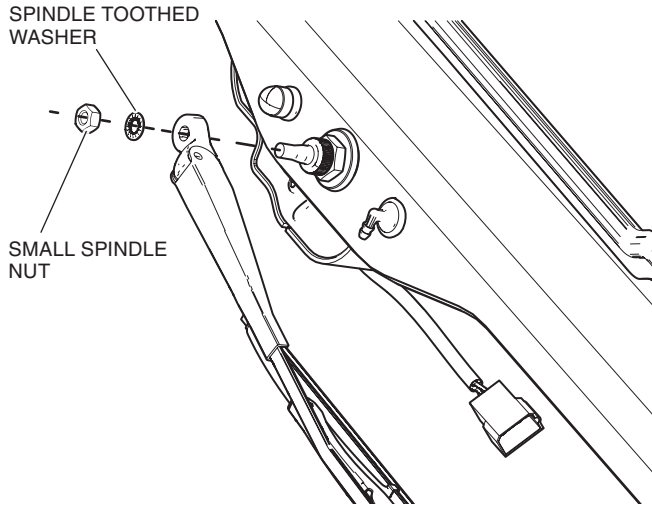


8. Hook the wiper blade into the wiper arm as shown.

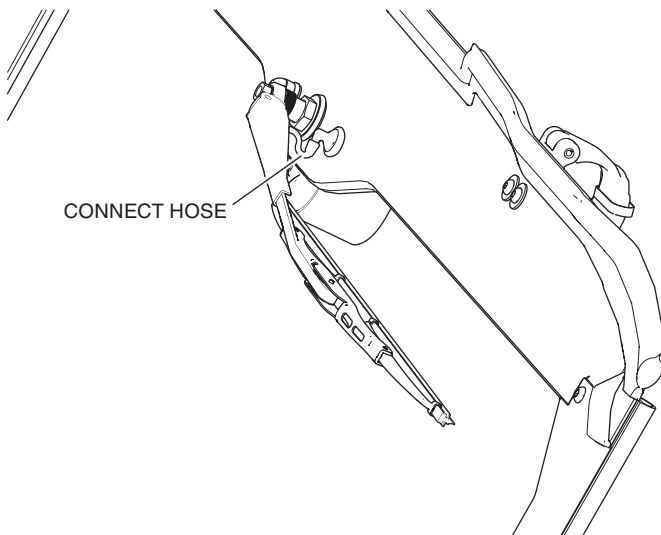


9. Fit the wiper arm over the motor spindle parallel to the top left side of the windshield.

- Fit the spindle toothed washer over the motor spindle then fasten the small spindle nut to secure the wiper arm in place aligned parallel to the windshield edge as shown.

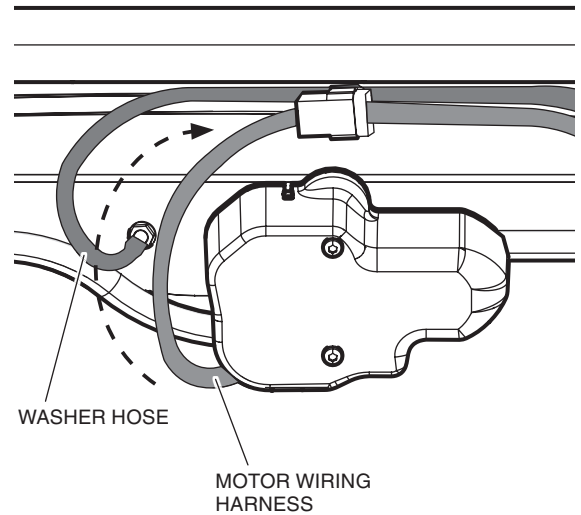


- Connect the wiper hose from the wiper arm to the elbow connector.

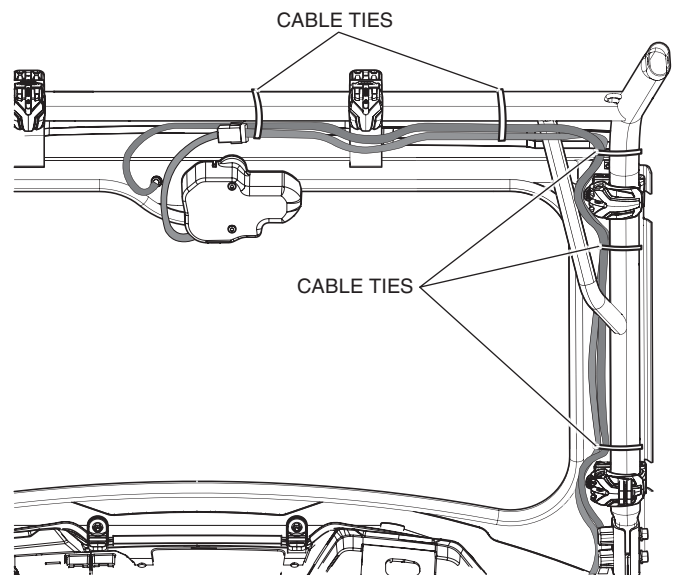


WIRING/FLUID CONNECTIONS

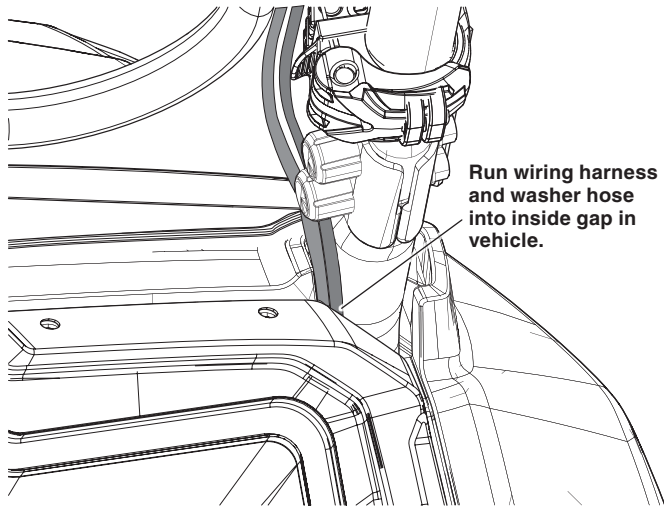
- Insert two medium plugs and one large plug into the center holes on the windshield. If using a washer/wiper kit leave these plugs out, as these holes are used for the washer/wiper.
- Route the motor wiring harness over the top of the wiper motor next to the washer hose as shown.



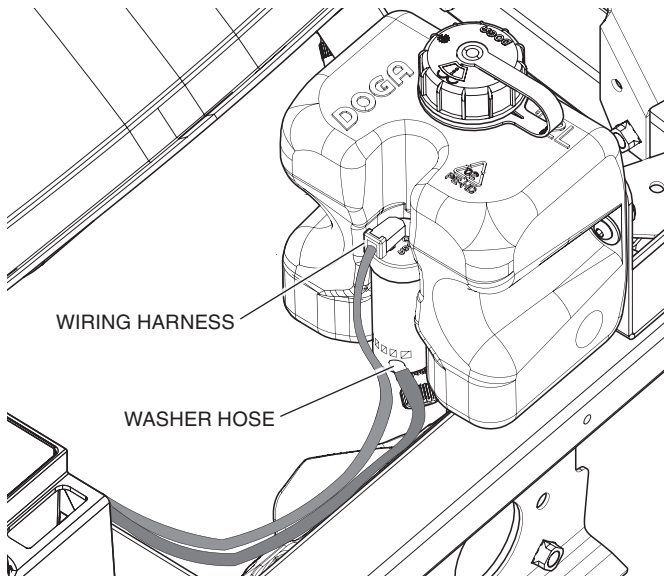
- Fasten the wiring harness and washer hose to the top bar of the OPS using a cable tie.
- Connect the washer/wiper wiring harness to the motor wiring harness.
- Run the washer/wiper wiring harness and washer hose along the top bar of the OPS over to the upper right corner, then down the right side of the vehicle as shown.
- Fasten the wiring harness and washer hose to the OPS using cables ties in the locations shown.



7. Run the wiring harness and washer hose into the gap in the side of the vehicle and under the hood to the fuse box.



8. Connect the central connector of the wiring harness to the fuse box.
9. Run the washer hose and second cable of the wiring harness under hood to the washer tank.
10. Connect the wiring harness and washer hose to the washer tank motor as shown.



11. Insert the switch into the switch plate of the vehicle.
12. Test the function of the wiper/washer using the switch:
 - Down: off
 - Up: wiper on
 - Press and hold up: wiper and washer on
13. Replace any hardware removed from the vehicle during installation of this accessory.